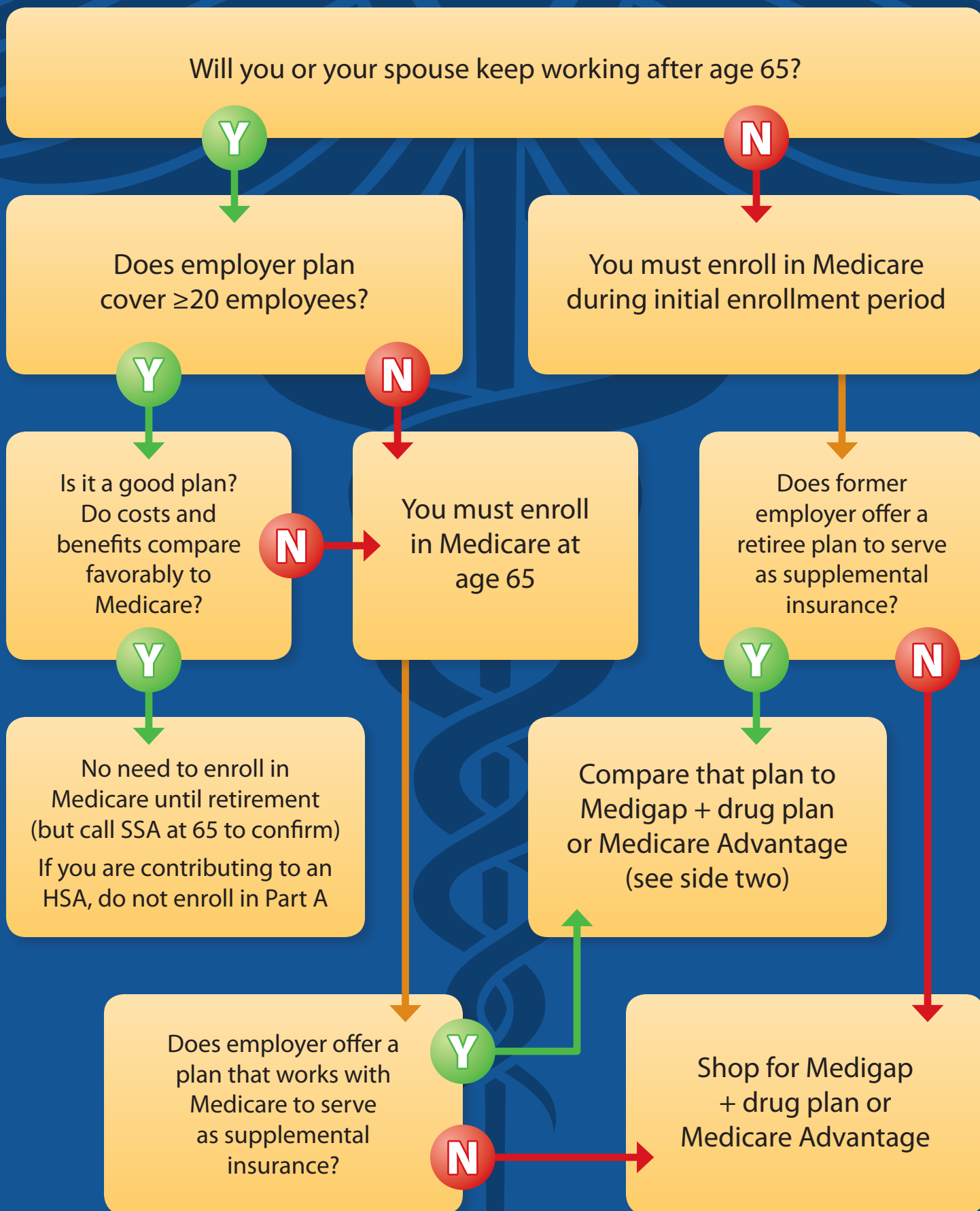


Medicare Enrollment Planning



Steps to take when comparing Medicare to 20+ employer insurance

STEP 1: Talk to your employer to see if your current insurance will change at age 65.

STEP 2: Gather all documents pertaining to your employer-sponsored insurance.

STEP 3: Find a comparable Medicare plan—either traditional Medicare A, B, D plus Medigap, or a Medicare Advantage plan.

STEP 4: Figure out which plan is a better value by comparing prices and benefits.

STEP 5: Consider other factors, such as spousal insurance, whether you'd have to change your doctors, etc.

STEP 6: Get a second opinion from a trusted insurance agent or consultant.

Considerations

- Can you see the doctor you want? Are the right specialists available if you need them?
- How much will you have to pay for your medications?
- What are the monthly premiums?
- What other out-of-pocket costs might you incur based on your expected health care usage?
- Are family benefits important? If the decision to go off the employer plan would affect your spouse's insurance, add the cost of spouse's coverage to your analysis.

To enroll in Medicare, visit ssa.gov/benefits/medicare or call (800) 772-1213

Tim Hudson, CFP®, CLU, ChFC, CRPS
Certified Financial Planner™ Practitioner
SilverStar Wealth Management, Inc.

Located in Cy-Fair Federal Credit Union
13525 Skinner Rd.
Cypress, TX 77429

281-477-3847

Tim@SilverStarWealth.com
www.SilverStarWealth.com



Securities offered through Kestra Investment Services, LLC (Kestra IS), member FINRA/SIPC. Investment advisory services offered through Kestra Advisory Services, LLC (Kestra AS), an affiliate of Kestra IS. Kestra IS and Kestra AS are independently owned and are not affiliated with SilverStar Wealth Management or any other entity referenced. Securities products are not insured by NCUA, are not guaranteed by Cy-Fair Federal Credit Union and are subject to investment risks including the potential loss.

Copyright © Horseshoof, LLC. All rights reserved. Horseshoof is an independent organization providing unique, unbiased insight into the critical issues facing financial advisors and their clients. Horseshoof, LLC is not affiliated with the reprint licensee or any of its affiliates.

License #: 5035633 Reprint Licensee: Tim Hudson